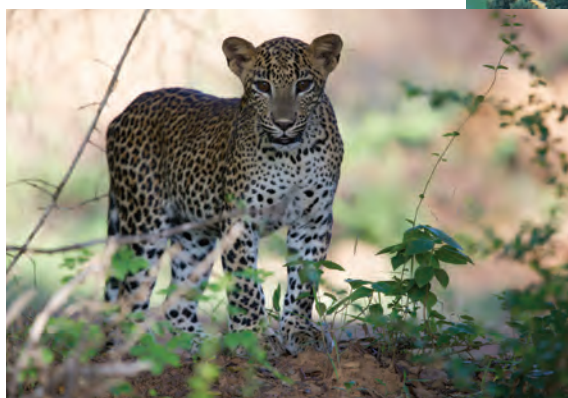


Touring Holidays in Sri Lanka

Expressions



Unique Sri Lanka Touring Holiday



www.expressionsholidays.co.uk
01392 441224

Unique Sri Lanka

11 NIGHTS / 12 DAYS

Galle

Yala

Ambewela

Sigiriya

Anamaduwa

Kalpitiya



Kalpitiya

Our Unique Sri Lanka touring itinerary aims to capture each of the diverse and fascinating sides to the island, be it cultural and historic, or natural. This tour of Sri Lanka incorporates the famous Galle Dutch fort, wildlife safaris at Yala National Park, a stay amongst the paddy fields and sweeping hills of Tea Country, and a chance to explore the rock temples of the Cultural Triangle. In addition you will have the chance to wander off the beaten track with a stay in the Mudhouse in the little explored Puttalam district and go dolphin-watching in the Indian Ocean from Kalpitiya. This tour is an excellent way for visitors to become well-acquainted with Sri Lanka as a whole.

ABOUT THIS TOUR

This tour takes you first from London to Bandaranaike International Airport. Your chauffeur-guide will take you first to Galle Fort, where you will spend one night at Fort Bazaar. Explore this historic area, before departing on Day Two for Mahoora Luxury Tented Safari Camp, where you will stay for two nights. On Day Four, begin your journey north, stopping for two nights at Jetwing Warwick Gardens in Ambewela. Take the time to wander through the tea estates and visit one of the tea factories. On Day Six, head further north to Sigiriya for two nights at Jetwing Vil Uyana, a secluded getaway stood on stilts above paddy fields. On Day Seven, visit the Sigiriya Rock Fortress. On your eighth day, travel to Anamaduwa, where you will spend two nights at the very rustic Mudhouse. Then, carry on to the coast and spend two nights at the Palagama Beach Resort. After relaxing on the beach and dolphin-watching, return to the airport on your twelfth day.

PRICES

From £3,370 per person

Based on double occupancy in hotels mentioned in the back of this document, with flights to and from Colombo, and private chauffeur-guide.

DATES

This holiday can be arranged throughout the year. Timings can vary depending on the month and day of the week.

WHAT'S INCLUDED

- Flights with Sri Lankan Airways from London Heathrow to Bandaranaike International Airport and back
- Entrance fees to the sites and monuments listed in the itinerary (optional excursions are charged at a supplement)
- Private English-speaking chauffeur-guide in an air-conditioned Japanese car for duration
- 1 night's bed and breakfast in Galle
- 2 nights' bed and breakfast in Yala National Park
- 2 nights' bed and breakfast in Ambewela in Tea Country
- 2 nights' bed and breakfast in Sigiriya
- 2 nights' bed and breakfast in Anamaduwa
- 2 nights' bed and breakfast in Kalpitiya

WHAT'S NOT INCLUDED

- Visa
- Meals and drinks, unless specified
- Personal travel insurance
- Additional nights in any destination

DAY-BY-DAY ITINERARY

Galle - Yala - Ambewela - Sigiriya - Anamaduwa - Kalpitiya

Expressions

Day one: Arrive in Colombo and continue to Galle

You will be met on arrival in Colombo and driven by your English-speaking chauffeur guide who will accompany you throughout your tour of Sri Lanka. Drive to Fort Bazaar in Galle Fort (approximately 2.5 hours) to check-in for one night. Depending on your flight arrival time, take a walk around Galle Fort and enjoy some sightseeing. Its rich heritage derives from the colonial influences of the Portuguese, Dutch and the British respectively, spanning four centuries. Galle was a key harbour city for centuries, hence its value to successive colonial superpowers. The town's centrepiece, the Dutch Fort, remains a hive of activity and is one of the few UNESCO World Heritage listed sites in which a bustling population continues to thrive.

Day two: Galle to Yala

In the morning, drive to Yala (approximately 5 hours). You will be taken into the Yala National Park in a 4WD jeep, where you will be camping in style here for the next two days (just outside the park). Enjoy lunch at the Mahoora tented safari camp followed by an afternoon safari. Yala National Park is famous for its leopards. The best chance to see a leopard is at dawn and dusk. Male leopards can often be seen walking the tracks during the day.

Day three: Yala National Park

Spend the day enjoying a full day safari at Yala National Park. In addition to the leopards, there are a large number of elephants living in the park. Spotted deer, sambar, wild boar, wild buffaloes, sloth bear, jackal and mongoose can also be seen. The bird life is fantastic too. Enjoy a fine al fresco dinner back at the camp.

Day four: Yala to Ambewela

After breakfast, drive to the hill country of Ambewela (approximately 6 hours). You will be staying at Jetwing Warwick Gardens for two nights. On arrival, walk around the property with the resident manager to learn about the history of the property. This old colonial 'bungalow' was built in the style of a Scottish country mansion over a century ago and offers a home from home experience.

Day five: Tea Country

Tea Country opens up a breath-taking panorama of colour with beautiful gardens, cascading waterfalls, lakes and sweet mountain air. Spend your day enjoying these beautiful sites. You could also visit a tea plantation and a tea factory.



Tea plantations

Day six: Ambewela to Sigiriya

After breakfast, set off on the journey to Sigiriya in the Cultural Triangle (approximately 5.5 hours). En route, visit Kandy, the last capital of the Sinhalese kingdom. Sightseeing will include the famous Temple of the Tooth as well as the beautiful Peradeniya Botanical Gardens. On arrival in Sigiriya, check into Jetwing Vil Uyana for two nights.

Day seven: Cultural Triangle

Today, you will be taken to the Hiriwaduna village (approximately 30 minutes) for a small nature trail where you will cross a lake in a traditional local boat. Afterwards, enjoy a typical Sri Lankan style rice and curry in a local village where you can talk to the villagers. In the afternoon, visit Sigiriya rock fortress - a UNESCO World Heritage Site. Known as Lion Rock, this was built in the 5th century during the reign of King Kasyapa.

Days eight and nine: Sigiriya to Anamaduwa

Drive to Anamaduwa (approximately 3.5 hours) where you will experience the lifestyle of a typical Sri Lankan village in The Mudhouse for two nights. Nestled in sixty acres of forest in the ancient rural heartlands of Sri Lanka, this is a private and seductive retreat, far from the beaten track providing an authentic back to nature experience.

Days ten and eleven: Anamaduwa to Kalpitiya

Today, drive to Kalpitiya (approximately 2 hours) and check-in to the Palagama Beach Resort for two days at leisure on the beach. While you are here, you could opt to do some water sports or go dolphin watching. There is also a chance of spotting whales in season. The Palagama is not a grand resort but offers quiet sunsets, good food and a friendly atmosphere.

Day twelve: Departure from Colombo

Transfer to the airport (approximately 4 hours drive).

OPTIONAL

It is possible to add extra nights in any of the destinations mentioned in this itinerary, or in a beach resort in the south west.

HOTELS

Our selection of hotels in Galle, Yala, Ambewela, Sigiriya, Anamaduwa, and Kalpitiya are described below.

Expressions

GALLE

Fort Bazaar

Opened in January 2016, the Fort Bazaar has enough character and traditional style to blend seamlessly with the older buildings on Church Street. Before its renovation, the boutique Fort Bazaar had lain empty and derelict since the 1950s, bereft of its former Dutch charm. The restoration, which began in 2006, soon returned the building to its former glory and introduced such delightful additions as balconies over Church Street, the swimming pool, and the spa. Hints of Middle Eastern style are artfully merged with a neutral palette and large airy windows to complete the contemporary feel. The focal point of the Fort Bazaar, however, is the central courtyard. This secluded stretch is lined with cushioned benches, tables and chairs, and is overlooked by the balcony-paths that link the private entrances of the upstairs rooms. Pink flowers contrast the olive green of the arched window frames and balcony railings, and crooked trees break up the white-washed walls. The Church Street Social Restaurant, reminiscent of a European pavement café, specialises in fusion dishes inspired by the blend of cultures that the fort has seen throughout history. The serene palette and plush furniture of the guestrooms helps to regain more of the sophistication that this 17th century townhouse once had; woven headboards, striking cushion designs, and sleek, monochrome bathrooms come together to create a feel of modern luxury; and the bright rugs, colourful food, and small carved iron lanterns add an effortless touch of exoticism. Visit the recently added Z Spa and the 15m swimming pool to unwind at the end of the day, before spending the night in your tranquil room. The Fort Bazaar is a beautiful, high-quality hotel in an area that cannot be missed on any tour of Sri Lanka. [read more](#)



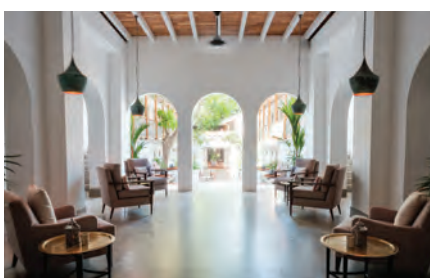
Fort Bazaar, Galle

YALA

Noel Rodrigo's Leopard Safaris

With two campsites in Sri Lanka, one in Wilpattu National Park and one in Yala, Noel Rodrigo's Leopard Safaris offers guests the choice between the well-trodden plains of Yala and the lesser-visited park of Wilpattu. Each camp is comprised of semi-permanent tents, each with a great sense of privacy and the welcome additions of modern amenities and electricity. These campsites are recommended for those looking to enjoy the 'wild' setting of a traditional safari, but with the comforts of excellent accommodation. Sturdy four-poster beds, curtained windows, classic en-suites, and peaceful verandas act as attractive finishing touches. Sheltered sitting areas provide respite at the end of a day's game drives, and flavoursome Sri Lankan cuisine is served around the camp table, creating a vibrant feeling of community. Other activities at the campsites include star-gazing and a photography class, and guided nature walks, and visits to nearby temples can also

be arranged. To complete your stay in Yala or Wilpattu, enjoy a refreshing drink around the campfire, or relax with a book in one of the hammocks.



Fort Bazaar, Galle



Noel Rodrigo's Leopard Safaris, Yala



Noel Rodrigo's Leopard Safaris, Yala

HOTELS

Our selection of hotels in Galle, Yala, Ambewela, Sigiriya, Anamaduwa, and Kalpitiya are described below.

Expressions

AMBEWELA, TEA COUNTRY

Jetwing Warwick Gardens

Jetwing Warwick Gardens lies 5,782 feet above sea level amidst simply stunning majestic mountains and tea-clad slopes. Set in 29 acres of grounds, with its own organic farm and tea estate, this unique Edwardian style Estate 'bungalow' (actually with an upstairs and downstairs) was once the dwelling of a Scottish tea planter. Beautifully restored a few years ago to reflect its original charm, Warwick Gardens has five bedrooms, a library, TV snugger, dining room, kitchen and a magnificent drawing room/lounge, leading out into the garden and perfectly manicured lawn. Rich interiors are filled with silky soft rugs and chandeliers, wooden floorboards, old oak furniture and wood-burning fireplaces; there is even a baby grand piano in the lounge. All the bedrooms are spacious and have luxuriously fitted en- suite bathrooms, the Master bedroom offering extra space and an amazing view to Uva Gap. The staff make full use of the wholesome, organic foods that they produce on the estate and fresh milk comes daily from Daisy, the bungalow cow. Culinary experiences range from a romantic Garden BBQ for a couple or small group to a typical English breakfast in bed or on the lawn with fresh eggs from the farm and delicious fresh guava jam. In the peaceful haven of Warwick Gardens, you can play croquet on the lawn and take a walk around the estate, pick your own vegetables for dinner and relax with a pot of fine high grown tea on the terrace. Spend your day exploring this beautiful mountainous region, with its tea estates and tea factories, hilltop villages, waterfalls, monasteries, the unique Horton Plains or Hakgala Botanical Gardens, returning to flop into a sumptuous sofa by the warm open fire in the Warwick Gardens lounge, back 'home'. In this micro-climate, expect daytime temperatures up to 26 degrees Celsius, dropping in the night time to 14-16 degrees, early morning mists and frequent afternoon rains. [read more](#)



Jetwing Vil Uyana, Sigiriya

SIGIRIYA

Jetwing Vil Uyana

Jetwing Vil Uyana near Sigiriya has been inspired by local and rural traditions, designed to enable guests to experience nature alongside the modern amenities of a luxury hotel in an atmosphere of total peace and calm. The 25 individual 'dwellings' at Jetwing Vil Uyana have been discreetly placed in and around a wetland system with reed beds, rice fields and lakes, specially reclaimed from disused land, making it a haven for wildlife and a place of tranquility for guests. Four different room types are offered at Jetwing Vil Uyana according to the setting: some 'dwellings' are built over the paddy fields or the marsh, others over the water and some are situated in the forest. All of the rooms make use of natural materials (predominantly wood) and draw upon local styles. Most have their own plunge pool and outdoor wooden deck. Guests at Jetwing Vil Uyana can choose to dine under the stars or in the privacy of their own room, or enjoy a meal in one of the two restaurants.

The Island Spa provides calming surroundings in which to relax with a treatment and guests will also be able to make use of the yoga pavilion. Specialist ayurvedic treatments are administered in a separate pavilion in the grounds. An excellent range of excursions are possible to explore the local area, from the Sigiriya Rock Fortress, which can be seen in the distance from the hotel, to elephant safaris, Loris watching in the hotel grounds and visits to the local village. Jetwing Vil Uyana near Sigiriya in Sri Lanka's Cultural Triangle combines luxurious surroundings with a real commitment to the local environment and its people. [read more](#)



Jetwing Warwick Gardens, Ambewela



Jetwing Warwick Gardens, Ambewela



Jetwing Vil Uyana, Sigiriya

HOTELS

Our selection of hotels in Galle, Yala, Ambewela, Sigiriya, Anamaduwa, and Kalpitiya are described below.



ANAMADUWA

The Mudhouse

In the ancient rural heart of Sri Lanka, The Mudhouse sits in a remote location about two hours' drive north of Colombo airport. Clusters of uniquely designed huts are located amidst 60 acres of forest land and have been built from local, natural materials, resembling all sorts of structures from a traditional village house to a tree house. Whilst each 'house' is different in layout and appearance, all have been designed with relaxation and comfort in mind and all the facilities are essentially the same, with outdoor showers and indoor bathrooms. All huts have dining areas and spaces which can be used for yoga and meditation. During your stay you have a number of different huts and structures allocated to you to 'call your own'. There is no mains electricity, but lighting at night is provided by candles and lanterns and the staff hut has solar panels and a limited supply of power for charging batteries. Guests stay on full board, eat in the main dining hut and meals are prepared in the traditional kitchen, mostly with firewood and clay pots, using much produce from the Mudhouse's own farm and garden. Guests are welcome to get involved with planting, watering or picking the produce. A stay here is an incredible experience in its own right but also for visiting local lakes and temples, bird watching and to visit the ancient city of Anuradhapura and sites of the Cultural Triangle. [read more](#)



Palagama Beach Resort, Kalpitiya

KALPITIYA

Palagama Beach Resort

On Kalpitiya Beach on the west coast of Sri Lanka, Palagama Beach is a collection of attractive beach cabanas, garden cabanas, and villas. This hotel was designed by Cecil Balmond and his son, whose works include the Orbit Tower in London, the CCTV in Shanghai, and the Casa da Musica in Portugal. In this project, however, the Balmonds have realised their vision of beautifully natural accommodation that reflects the heritage of its surroundings. With the sand just a few steps away from the rooms, this rustic accommodation is perfectly placed for seaside and forest relaxation. Subtle, unobtrusive modern touches, such as the sleek infinity-esque outdoor pool, complete the private spaces that offer a tranquil alternative to the beach. Villas and cabanas have traditionally thatched roofs, and wooden and plastered walls. The rooms, like the complex itself, are etched with simplistic Sri Lankan character, then cultivated by bold fabrics,

canopied beds, and exposed wood. The Coralia Restaurant specialises in flavoursome Sri Lankan cuisine, including hoppers, rice and curry, and Watalapam. Cookery classes with the chef are also available to those guests who wish to take a long-lasting souvenir with them when they leave. Other once-in-a-lifetime activities include dolphin- and whale-watching excursions; alternatively, soak up the serene Sri Lankan atmosphere from under the open-sided spa cabana, while enjoying a luxurious massage. Palagama Beach envelopes guests in a true sense of rural Sri Lanka, surrounded by trees, sand, and sea, thus making an excellent stop-off point on a luxury tour of Sri Lanka. We would recommend combining Palagama Beach with stays in modern resorts and inland villas to ensure you witness every side of this diverse island. [read more](#)



The Mudhouse, Anamaduwa



The Mudhouse, Anamaduwa



Palagama Beach Resort, Kalpitiya

MAP OF UNIQUE SRI LANKA TOURING HOLIDAY

The map below illustrates the route outlined in this touring itinerary, with overnight stops and places of interest highlighted.



GENERAL INFORMATION

This touring holiday is one of several suggested holidays we can offer you exactly as it is but also with any alterations you might want, including extra nights in one or more places or adding in extra places. All our tours can be extended so that you can include a longer stay in one location too, perhaps at the end of the itinerary. Do call to discuss the options with our travel consultants.

The logo for Expressions Holidays, featuring the word "Expressions" in a white, elegant cursive font on a dark blue rectangular background.

OUR TOURS

Our touring holidays are for individuals travelling on their own or in their own family group. You do not join a group, but are escorted by your own private English-speaking chauffeur-guide.

FLEXIBLE ARRANGEMENTS

Our arrangements are very flexible in that you choose to travel on any day you want, subject to availability of flights and hotels. As mentioned above, additional nights can be added at any point.

FLIGHT ARRANGEMENTS

Sri Lankan Airways operates daily flights to Colombo from London Heathrow. Most flights leave London in the afternoon or evening. Flight time is about 11 hours. There is economy and a business class cabin. In recent years, the business class cabins have been upgraded to fully reclining flat-beds. From Colombo you can also take the Sri Lankan air taxi to regional centres throughout the country. Sri Lankan Airways also operates flights to the Maldives via Colombo, making Sri Lanka and the Maldives a perfect two-centre combination.

TRAVEL WITHIN SRI LANKA

We include private transfers with all our holidays to Sri Lanka, and a personal chauffeur with all our touring holidays. Your English-speaking chauffeur-guide will meet you on arrival at Colombo airport, then accompany you on your journey around the island. All our holidays are for individuals, so you travel as your own party and do not join a group. It is also possible to hire a car in Sri Lanka, which can be arranged locally or in advance. A more popular option is to hire a car with driver for day trips or excursions, which, again, can be arranged by us in advance or by the hotel locally.

TOURING HOLIDAYS

A touring holiday of Sri Lanka is at the heart of what many of our clients want to experience from this fascinating country, and it is where we excel at using our personal knowledge and experience to tailor a holiday that is a perfect match for you. Stay in several different locations around Sri Lanka, allowing time to explore and relax in each. Combine a few nights on the beach with stays in the Kandy Hills, in the Cultural Triangle, on a high tea estate or in a national wildlife park, in Galle, Negombo, or Colombo. It makes sense to factor in a night or two in Colombo, Negombo, Wadduwa, or at the Wallawwa near the airport, at the beginning and/or end of your holiday to coincide with flight times.

REGIONS OF SRI LANKA

Roughly only half the size of England, yet packed with a whole continent's worth of temples, ruins, wildlife reserves, and luxury beach resorts, Sri Lanka is a beautiful, bite-sized slice of paradise offering a whole world of diverse escapes. Littered with elegant colonial hotels and enchanting boutique lodges, Sri Lanka also offers luxury at a relative snip. Young or old, family or couple, beach-bound or culture-vulture – a visit to Sri Lanka satisfies everyone. Formerly an Arab trading port, the commercial capital Colombo is a bustling, colourful town, with a fabulous bazaar, colonial churches, and craft markets. To the north of Colombo lies Negombo and the beaches of the west coast, whilst to the south Wadduwa is the start of a string of fabulous beaches running all the way down and around Sri Lanka's southwest coast, with a collection of intimate, exquisite beach resorts. Further southward lies historic Galle, a reminder of the Dutch presence on the island. Inviting as Sri Lanka's coastline is, however, the island's interior is worth the airfare alone, with forest parks sheltering leopards and wild Asian elephants, a verdant hill country carpeted in tea plantations with lovely boutique planter's house hotels, and no visitor to Sri Lanka should be allowed to miss the Cultural Triangle, boasting five UNESCO World Heritage Sites in an area no bigger than Kent. New to tourism is the north and north east of Sri Lanka, strewn with Hindu temples, colonial gems and long white beaches offering spectacular snorkelling.

THINGS TO SEE IN SRI LANKA

Cricket is a national sport, played on every dusty maidan and patch of grass from Jaffna to Galle. A real highlight of any trip to the south is Galle Fort, where you can wander round the ancient ramparts at sunset, watching cricket games below, or stroll along the narrow streets in search of antiques in tiny, friendly shops. Local festivals such as Vesak full moon in May and Poson full moon in July, as well as the famous Esala Festival in Kandy in July and August, when Buddha's tooth is taken out from the temple and paraded through the streets. Visiting national parks, sheltering an abundance of wildlife including leopards, elephants, bears and hundreds of species of birds. Buying tea, gems, jewellery, spices for a local bazaar. Fantastic spicy local cuisine, specialising in fish dishes, and delicious 'egg hoppers.' Tea-tasting in the hill country. Sigiriya Rock Fortress. The Cave temples of Dambulla. The medieval capital and ruins of Polonnaruwa. The sacred city of Anuradhapura. The west coast beaches flanked by palm trees, including Negombo, Beruwela, Bentota and Galle. The elephant orphanage at Pinnawela. The tea plantations near Nuwara Eliya, a region known locally as Little England. Ayurvedic massage. A warm welcome wherever you go.

OUR PRICES

The sample prices mentioned in this leaflet are generally a 'from' price based on the cheapest season of travel. However, flight and hotel rates can change (up and down depending on offers), so we give you an accurate price for your holiday when we provide you with a quotation. Our sample prices should be used as an indication of how much a particular combination will cost and to show the differences on average between the hotel categories on offer.

PRICE INFORMATION IN MORE DETAIL

Scheduled return flights from London Heathrow to Bandaranaike International Airport with Sri Lanka Airways and accommodation at Fort Bazaar, Noel Rodrigo's Leopard Safaris, Jetwing Warwick Gardens, Jetwing Vil Uyana, the Mudhouse, and Palagama Beach Resort.

From £3,370 per person.

BOOKING CONDITIONS

Our booking conditions apply to all holidays. A copy can be found on our website and a copy is also sent to you with a written quotation and when you make a booking.

FINANCIAL PROTECTION

Expressions Holidays offers full financial protection for all holidays you book with us. If your holiday includes a flight, the ATOL (3076) covers the costs of the holiday. If the holiday does not include a flight, it is the ABTOT bond that protects the cost of the holiday. We are also members of AITO (the Association of Independent Tour Operators) and ABTA.



Expressions Holidays

Lynx House, Pynes Hill, Exeter EX2 5JL

HOW TO BOOK

To make a booking, just phone us on

01392 441224

and we can take you through the details we need and start the booking process. A deposit is required to confirm the arrangements and this can be paid by debit or credit card over the phone. No handling fee is charged on deposits up to £1000. The level of the deposit will be confirmed at the point of booking and will depend on the ticketing deadlines involved in your booking.